



GAT MONTHLY MEMBERSHIP PROGRESS REPORT

Results as of: 2/28/2023

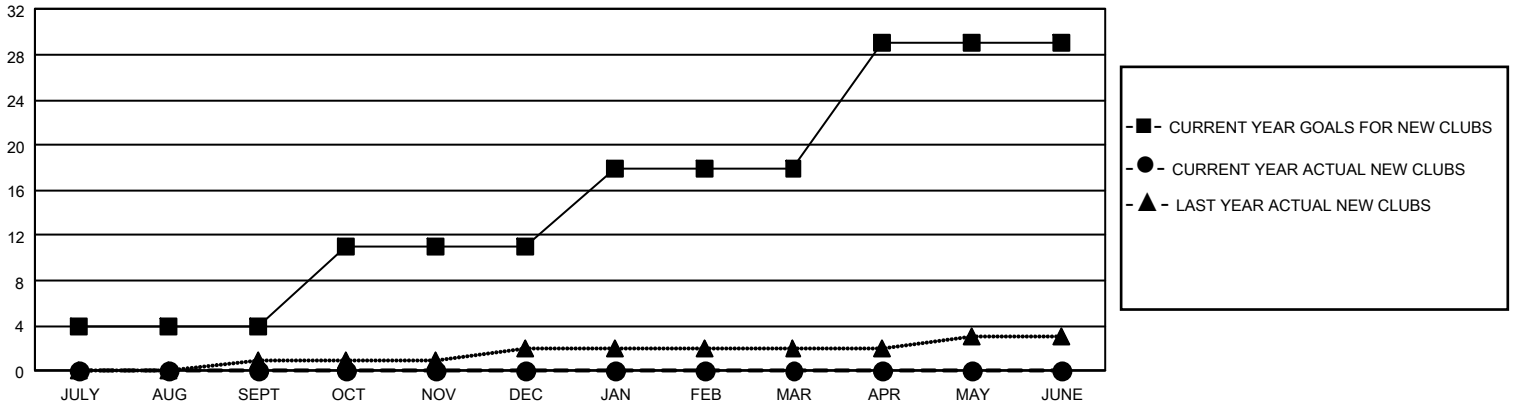
GMT Constitutional Area 1, Group E

REPORT DOES NOT INCLUDE CLUBS IN UNDISTRICTED AREAS.

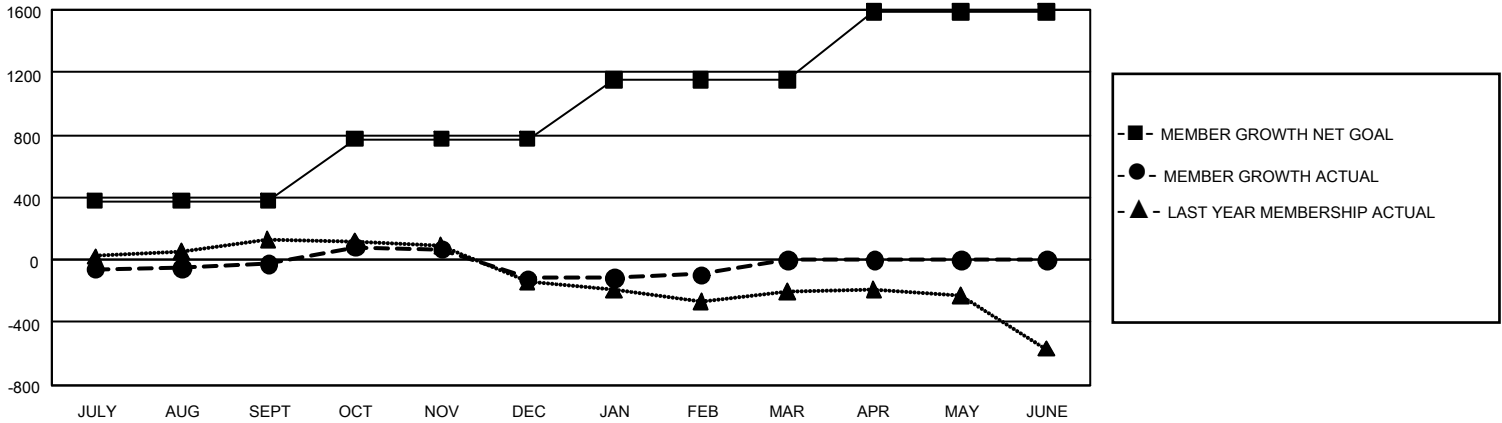
Clubs			
RESULTS FOR 2022-2023			
QUARTER	NEW CLUB GOAL	NEW CLUBS	DROPPED CLUBS
JULY/AUG/SEPT	12	0	5
OCT/NOV/DEC	21	0	2
JAN/FEB/MAR	21	0	1
APR/MAY/JUNE	33	0	0

Members			
RESULTS FOR 2022-2023			
QUARTER	MEMBER GROWTH NET GOAL	MEMBER GROWTH ACTUAL	DROPPED MEMBERS ACTUAL (including transfers)
JULY/AUG/SEPT	378	777	711
OCT/NOV/DEC	397	738	774
JAN/FEB/MAR	375	505	431
APR/MAY/JUNE	435	0	0

GOALS AND ACTUAL NEW CLUBS CUMULATIVE



GOALS AND ACTUAL MEMBERS CUMULATIVE



DROPPED CLUBS: 8	547 CLUBS OF 1,002 ADDED 1 OR MORE NEW MEMBERS	<u>GENDER DISTRIBUTION</u>	
		MALE 21,655 (71.27%) FEMALE 8,725 (28.71%) NON BINARY 0 (0.00%) PREFER NOT TO ANSWER 5 (0.02%)	
<u>DROPPED MEMBERS</u>		CLICK HERE FOR CUMULATIVE MEMBERSHIP DATA	TOTAL FAMILY UNIT MEMBERS 5,482
DECEASED 316 CLUB CANCELLED 45 OTHER 1,555 TOTAL 1,916			FAMILY MEMBERS PAYING HALF DUES 2,796